

Non-Reversing Part Numbers

hp	Motor Contactor Part Number	Wiring Set Part Number	Relay Part Number	SWIRE Communication
0.08	PKZM0-0.25	PKZM0-XDM12	DILM7-10(24 VDC)	BL20-SWIRE-DIL
0.12	PKZM0-0.4			
0.24	PKZM0-0.63			
0.33	PKZM0-1			
0.74	PKZM0-1.6			
1	PKZM0-2.5			
2	PKZM0-4			
2.95	PKZM0-6.3			
4	PKZM0-10			
5.4	PKZM0-10*			
7.38	PKZM0-12			
10	PKZM0-16	PKZM0-XDM32	DILM15-10(24 VDC)	
15	PKZM0-25		DILM25-10(24 VDC)	
20	PKZM0-32		DILM32-10(24 VDC)	

* To order a motor starter with the rated hp, order one of each part number that appears to the right.



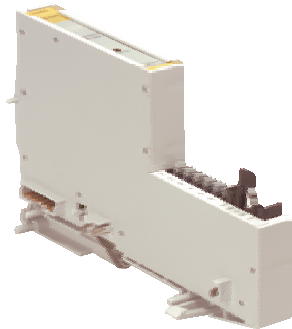
Reversing Part Numbers

hp	Part Number	Wiring Set Part Number	Relay Part Number	Relay Part Number	SWIRE Communication	SWIRE Communication	Mechanical Interlock
0.08	PKZM0-0.25	PKZM0-XRM12	DILM7-10(24 VDC)	DILM7-10(24 VDC)	BL20-SWIRE-DIL	BL20-SWIRE-DIL	DILM12-XMV
0.12	PKZM0-0.4						
0.24	PKZM0-0.63						
0.33	PKZM0-1						
0.74	PKZM0-1.6						
1	PKZM0-2.5						
2	PKZM0-4						
2.95	PKZM0-6.3						
4	PKZM0-10						
5.4	PKZM0-10*						
7.38	PKZM0-12	PKZM0-XRM32	DILM9-10(24 VDC)	DILM9-10(24 VDC)			
			DILM12-10(24 VDC)	DILM12-10(24 VDC)			
			DILM15-10(24 VDC)	DILM15-10(24 VDC)			
			DILM25-10(24 VDC)	DILM25-10(24 VDC)			
15	PKZM0-25		DILM32-10(24 VDC)	DILM32-10(24 VDC)			
20	PKZM0-32						

* To order a motor starter with the rated hp, order one of each part number that appears to the right.



**SWIRE Economy
Communication Module**



- Modular Motor Starter Control
- Fieldbus Independent Configuration
- IP 20 Protection
- Base and Electronics in One Part

Electrical

- Operating Current: ≤ 60 mA from V_{MB}
 < 3 A from V_{IO}

Mechanical

- Operating Temperature: 0 to +55°C (+32 to +131°F)
- Protection: IP 20

Diagnostics (Logical)

- Diagnostic information available through the fieldbus gateway

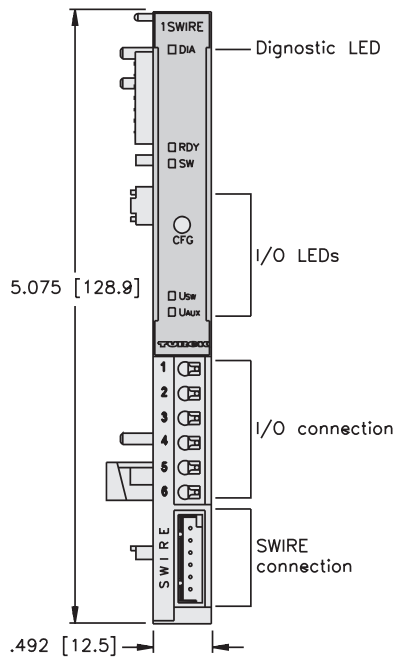
Diagnostics (Physical)

- LEDs for status and I/O diagnostics

Supported Gateways


- BL20-GW-DPV1
- BL20-GWBR-CANopen
- BL20-GWBR-DNET

BL20-E-1SWIRE




Motor Overload Contactor

- Protects Motor from Current Overload

Housing	Part Number	Application
	PKZM0-*	<ul style="list-style-type: none"> • Available in multiple amperages • See table on page C50 for Specs.

Motor Starter Wiring Set

- Wires Motor Overload Contactor to Relay Module

Housing	Part Number	Application
	PKZM0-X*M*2	<ul style="list-style-type: none"> • Different styles for different amperages • See tables on C51 & C52 for correct part numbers